

Issues for the entrance exam
Second-cycle studies in the field of MANAGEMENT (specialty International Management)

1. Activity of setting goals and effecting their realization in organizations is:
2. The process of marketing management (in classical terms) includes the following stages:
3. The marketing mix (in classical terms) includes:
4. Name, trade mark, logotype or a combination of these elements used to identify a product or service and to distinguish it from competitors is a definition of:
5. The principle of periodicity in accounting is:
6. Which of the following is not a primary function of accounting:
7. The matching principle in accounting is, among others:
8. A company maximizes profit when the marginal revenue is:
9. Non-returnable co-financing of pro-environmental projects is defined as:
10. The objective of eco-design of products is to:
11. Working capital management is defined as:
12. The basic factor determining the value of an enterprise is:
13. The working capital cycle defines the period of:
14. The process in organizational and management sciences is most often defined as:
15. According to Porter, processes in organizations are classified as:
16. What sub-processes does the production process consist of?
17. The function of organizing production is:
18. An analysis assessing strengths and weaknesses, opportunities and threats is:
19. What factors does the PEST analysis concern?
20. The management process involves:
21. Lean Management is a management concept characterized by:
22. One of the characteristics of a company is the priority of objectives:
23. The intangible assets of the organization include, among others, the following:
24. Basic components of the environment include:
25. Typical economic processes are:
26. Effective demand can be defined as:
27. Complementary goods can be defined as:
28. On a perfect competition market of production factors, the prices of these factors are determined by:
29. According to the law of diminishing returns, assuming that the amount of other factors of production does not change:
30. Price differentiation is related to:
31. According to the principle of cost-benefit optimization, a measure should be taken if and only if:
32. You sell your product on a perfect competition market. The marginal revenue from the sale of the product is equal to:
33. Transferring some of the costs and benefits resulting from the activities of a business entity to third parties without adequate compensation is referred to as:
34. The internalization of environmental costs is one of the principles of:
35. Who creates anthropogenic capital?
36. The principle of sustainable development, whereby business entity bears the costs of prevention and remedying environmental damage caused by this entity, is a principle:
37. Under which management function are the objectives of the organization and methods of their implementation determined?

Issues for the entrance exam
Second-cycle studies in the field of MANAGEMENT (specialty International Management)

38. Which management function is about explaining the objectives of the activity and encouraging the performers to execute their tasks?
39. The participation of particular management functions depends on the type of organization and the level of management hierarchy. Therefore, decisions and management actions can be said to be:
40. The operational level of management is responsible for:
41. The span of control in management is defined as:
42. Organizational crisis is a breakthrough moment, according to the concept of organization development proposed by:
43. The organization development model proposed by Quinn and Cameron includes the following steps:
44. According to Adizes model, the organizational behaviors are oriented on:
45. The main goal of commercial organizations is:
46. Vertical disintegration is a feature of what kind of organization?
47. The four-part organization model according to Leavitt consists of:
48. Aspirations, continuous efforts and a scope of organization's socially desirable activities are articulated in:
49. The concept of the long-term functioning of the organization, including the operationalized main objectives, methods of operation and rules of behavior:
50. The function of control within the management process should be related to:
51. As part of the management process, control is about:
52. As part of the management process, prospective control is about:
53. What does the role of a financial manager in a company entail?
54. At which management level the organizational function is most important?
55. At which management level the stimulation/motivation function is most important?
56. Information and decisions of the management apparatus transmitted through information channels (shaped by organizational rules) to organizational units of the real sphere, which result in efforts to achieve the goals of the organization are:
57. Organizational culture manifests itself in:
58. An objectively, subjectively, spatially, temporally and usually also procedurally separated part of a goal to be achieved within a fixed period of time or by a defined deadline falling within the period of time provided for the realization of this goal is :
59. Which tax has the greatest share in the revenues of the Polish state budget:
60. The example of a company external equity financing is:
61. A commune (Polish *gmina*) can derive income from a share in revenue of which tax:
62. The gross budgeting method is a form of conducting financial management of a unit that is:
63. A dividend in a joint-stock company or a limited liability company is paid out of profit:
64. The least risky financial instruments are:
65. In what form can insurance companies in Poland operate?
66. On what market are shares traded?
67. Increasing permeability of all kinds of borders, including national borders, borders of economies, industries and organizations as well as less tangible borders such as cultural norms, are features of:
68. Stakeholders are:

Issues for the entrance exam
Second-cycle studies in the field of MANAGEMENT (specialty International Management)

69. Concurrent and interdependent competitive relations and cooperation between competitors maintaining their organizational independence is called:
70. The classic decision making process of an individual purchaser involves the following steps:
71. In the macro-environment of an enterprise (the so-called far environment) the following groups of factors can be distinguished:
72. Opportunities in the SWOT analysis are defined as:
73. Threats in the SWOT analysis are defined as:
74. In a floating exchange rate system, the increase in the exchange rate of a given currency is called:
75. A reduction of the market interest rate causes:
76. Price discrimination allows a company to:
77. Price discrimination occurs when a company sells:
78. First degree price discrimination occurs when a company:
79. Renewable energy resources include:
80. The difference between environmental fee and environmental tax is that:
81. The rules and procedures for carrying out environmental impact assessment of projects is laid down in the Act:
82. The most important feature characterizing the enterprise's environment is:
83. The near environment of the organization is composed of:
84. The far environment of the organizations is composed of:
85. Comparison of company's solutions against the best solutions on the market is called:
86. Which type of benchmarking is the most difficult to apply:
87. Radical reconstruction of an enterprise, resulting most often from its very bad situation, is:
88. The marketing micro-environment is:
89. The studies of the enterprise's macro-environment include:
90. In which method experts are asked to estimate future phenomena in figures?
91. Forecasting based on trends observed in the past and on an assumption that the phenomenon will change as it has so far is:
92. A process designed to create a model of reality in order to perform various operations and transformations on this model instead of on the actual reality is:
93. The type of personality opposite to introvert is:
94. Which of the given skills does not result from the social nature of a human being?
95. What kind of decision-making process limitations are the differences in beliefs about people's ability to think rationally?
96. Expectations towards an individual related to having a specific social status. A set of rights and obligations resulting from the social position held by an individual. What concept does this definition refer to?
97. Self-exploration is about identifying:
98. The ability to recognize one's own and other people's emotional states is related to the concept of:
99. Appearance, health, abilities, motivation, family and society constitute:
100. The resolution of interpersonal conflicts is based on use of:
101. According to the customer typology, the most difficult customer is:
102. A strong, conscious or unconscious, sense of positive (happiness, delight, fulfillment) or negative (anger, disgust, fear) stimulus is:

Issues for the entrance exam
Second-cycle studies in the field of MANAGEMENT (specialty International Management)

103. Which of the following factors is not a psychological factor influencing the behavior of individuals in organizations:
104. Which factors do not influence the formation of human self-awareness?
105. Which of the dimensions is not used to classify emotions?
106. Motivation theories can be subcategorized as:
107. According to Herzberg's dual-factor theory, hygiene factors include, among others:
108. According to Skinner's theory, the behavior of employees can be:
109. According to Latham and Lock's theory, an employee's motivation increases when:
110. The human capital model emphasizes:
111. Which of the features is characteristic for the sieve model?
112. Which of the features is characteristic for the human capital strategy?
113. An autocratic manager is a manager who:
114. A democratic manager is a manager who:
115. The most important functions performed by a project manager include:
116. Which of the conditions does not cause the formation of an authoritarian personality?
117. The so-called managerial grid model proposed by Blake and Mouton identifies:
118. An average person has the need to perform sensible work to the extent that he/she needs food, sleep or air - this is one of the assumptions of:
119. The choice of a solution should be preceded by a search for different solutions and their evaluation - this postulate is characteristic of:
120. According to the bounded rationality idea, the final choice of possibilities is determined by:
121. What style of leadership does the coordination of a simple task require?
122. Which leadership style is the most appropriate in an organization in a crisis situation?
123. Which leadership style is characterized by a significant participation of all team members in decision making?
124. What style of leadership is characterized by the assumption that a leader is the most important person in an organization?
125. Which style of leadership is characterized by passivity of the leader in relation to the team's actions?
126. The basic universal leadership roles are:
127. Representation and leadership are the elements of which leadership roles?
128. The Theory of X and the Theory of Y formulated by McGregor characterize:
129. According to McGregor, a person who is willing to work and does not need to be strictly supervised represents which type?
130. According to McGregor, a person for whom work is a necessity, who works because he/she has to, who requires constant supervision, represents which type?
131. Mutual actions between a superior and a subordinate are defined as:
132. For an organization focused on high quality of its products and services, it is most appropriate to choose a human resource management model based on:
133. When designing procedures and tools for human capital management in an organization, it is necessary to take into account:
134. According to the theory of reinforcement, the behavior of employees can be influenced by:
135. Which management function is about explaining the objectives of the activity and encouraging the performers to execute their tasks?
136. The concept of management by objectives is based on the theory of:

Issues for the entrance exam
Second-cycle studies in the field of MANAGEMENT (specialty International Management)

137. What are the coercive measures that can be applied in organizations based on?
138. Evaluation of employees is an important element of which management function?
139. Mixed models of employment planning include employment planning based on:
140. Can an alternative decision criterion, i.e. cost minimization, be used in cost-benefit analysis?
141. How does a discount rate affect the present value of an investment?
142. In general, the net present value of each stream of money can be expressed as
$$NPV = \sum_{t=0}^n \frac{NCF_t}{(1+r)^t}$$
. What does the NCF symbol stand for in this formula?
143. A method for assessing investment effectiveness that does not use the change in value of money in time is:
144. In the case of a modified internal rate of return, an investment is profitable when:
145. Which indicator relates to a company's long-term liquidity assessment?
146. The quick ratio formula is:
147. The cash ratio formula is:
148. The current ratio formula is:
149. The liquidity indicator informing about the company's ability to settle liabilities based on all current assets is:
150. Discounting of cash flows means multiplying them by:
151. The measure of data dispersion is, for example:
152. A measure of the level of interdependence between two nominal variables, of which at least one contains three or more potentially accepted values, is (among others):
153. What (among others) illustrates the dynamics of changes in economic phenomena?
154. What is a fixed base index?
155. What is a chain base index?
156. A database is defined as:
157. Documents shared by HTTP servers are identified by URLs (Uniform Resource Locator). The URL is a string that contains:
158. Which type of software controls the use of computer resources?
159. What is used to create a dataset that meets certain criteria in database systems:
160. A field (or set of fields) in a table that clearly defines a given record in database systems is:
161. What keyword should be used to declare a variable in Visual Basic for Application programming language?
162. Which model is the basis of the Visual Basic for Application programming language?
163. In the context of human resources management, the role of organizational culture is:
164. Organizational culture constitutes:
165. In his classification of cultural dimensions, Richard Gesteland proposed the differentiation of cultures:
166. The three levels of organizational culture according to Shein include:
167. According to the Hofstede study, the cultural dimension of "uncertainty avoidance" concerns:
168. In organizational culture, the artifacts are:
169. The main factors influencing organizational culture are:
170. Decision making through consensus is a feature of which culture?
171. Management by delegation is:

Issues for the entrance exam
Second-cycle studies in the field of MANAGEMENT (specialty International Management)

172. What culture is characterized by: emotional coldness in relations between the participants of an organization, depersonalization of relations, subordination and passivity in action, conservatism and lack of flexibility towards new situations?
173. In Natura 2000 areas it is possible to carry out investments which:
174. Natura 2000 is a network of protected areas in the territory of the European Union. What are the two types of protected areas?
175. The strategic document which regulates the environmental policy in Poland is:
176. The regulations governing the commencement of business activity by an entrepreneur who is a natural person are contained in:
177. The main legal basis for the freedom of economic activity is contained in:
178. The provisions imposing the obligation to pay interest for a delay in payment are included in:
179. An organizational unit becomes a legal entity as of the date of:
180. The formation, form of government and termination of legal persons are determined in:
181. According to the provisions of Polish law, a business entity is:
182. Current decisions in a joint-stock company are made by:
183. Who represents a joint-stock company?
184. A supervisory board in a listed company is most often appointed for the next term by:
185. An entity may change the solutions adopted in the accounting policy:
186. Who is responsible for developing the accounting policy of an entity?
187. The basic source of accounting regulations in Poland is/are:
188. A partnership which can only be established by independent professionals, is:
189. The establishment of a limited liability company requires:
190. The registered office of a legal person is:
191. A company should cease production in the short-term if price falls below:
192. A company should cease production in the long-term if price falls below:
193. The fundamental provisions relating to the formation of a civil law partnership can be found in:
194. The fundamental provisions governing the operation of commercial companies are found in:
195. A general partnership agreement should include:
196. The method of assessing the risk of a financial decisions is:
197. The method of assessing the risk of an investment project is:
198. The accounting rate of return is a ratio of:
199. The preliminary analysis of balance sheet includes:
200. Legal regulations define a business activity as:
201. Legal regulations define an entrepreneur as:
202. The point where total costs equal sales revenue is:
203. An increase in the frequency of interest capitalization during a year results in an increase in the amount of interest capitalized:
204. One the main features of sole proprietorship is the fact that:
205. A deficit/surplus in a budget of a local government unit is a difference between:
206. The methods of evaluation of investment projects taking into account the change in the value of money over time do not include:
207. The difference between the company's revenue and expenditure is called:
208. Degree of Total Leverage (or Degree of Combined Leverage) informs about the change:
209. The methods of a company valuation include:

Issues for the entrance exam
Second-cycle studies in the field of MANAGEMENT (specialty International Management)

- 210. GDP does not include:
- 211. The unemployment rate is calculated as the ratio between the number of unemployed persons and:
- 212. If real GDP has increased and nominal GDP has decreased:
- 213. If a 1% fall in price results in a 2% increase in demand, then the demand is:
- 214. Demand-pull inflation may derive from:
- 215. The risk-free rate of return may be set at a level equal to:
- 216. The method of collecting primary information in which respondents give written answers is:
- 217. The method of collecting primary information in which an interviewee answers the interviewer's questions orally is:
- 218. Questions that concern the characteristics of a respondent and/or a company he/she represents are:
- 219. Systematic maintenance, record-keeping, archiving, elaboration of data and findings concerning the specific situation of the company is:
- 220. Which group of methods includes the techniques of collecting data from primary sources such as a test of word associations and a test of sentences completion?
- 221. In a questionnaire, the questions with options of answers are:
- 222. Open questions are used in a questionnaire when:
- 223. The method of secondary measurement in marketing research is:
- 224. What is the aim of marketing research?
- 225. Systems for creating special markets are among the instruments in environmental protection. Which category of instruments do they belong to?
- 226. Ecological reviews are one of the instruments in environmental protection that belong to the category of:
- 227. Corporate social responsibility is defined as a concept whereby companies, at the stage of strategy building, take into account social and environmental interests, as well as relations with various stakeholder groups:
- 228. What are environmental public goods?
- 229. The standards defining the maximum allowed quantities of pollutants released into the environment are:
- 230. Strategic environmental impact assessment is an environmental impact assessment procedure concerning:
- 231. A polluter bears cost that is proportional to the size of pollution - this is a definition of:
- 232. The social responsibility of an organization manifests itself through, e.g.:
- 233. The concept of corporate social responsibility refers to:
- 234. The concept of corporate social responsibility originally referred to:
- 235. Recommendations concerning social responsibility of an organization are included in:
- 236. Various organizational relationships described in an organization chart and bylaws, including the material components of the organization, are: .
- 237. A synergistic effect occurs when an organization achieves:
- 238. What type of organizational structure is based on the division into markets, products or customer groups?
- 239. An elementary unit of activity having a separate managerial segment is ?
- 240. What does the range of leadership inform about?

Issues for the entrance exam
Second-cycle studies in the field of MANAGEMENT (specialty International Management)

- 241. An elementary unit being a part of organization, defined, among others, in terms of activities and duties performed, decision-making powers and responsibilities, is:
- 242. A document that comprehensively regulates the order in the organization, contains (among others) basic principles of functioning, instructions and framework procedures is ?
- 243. Ensuring necessary resources and ordering the process in space and time is:
- 244. An organization's feature determining the distribution of decision-making powers in a hierarchical system is:
- 245. An authority body that is appointed or selected in a process performed on the basis of legally regulated procedures is:
- 246. The effect achieved by combining personal entities and activity drivers with permanent organizational links in a single organized whole with a common managerial body is:
- 247. An authority whose source is the heritage of social status, e.g. the authority of the elderly, is:
- 248. Delegating part of the decision-making powers to the lower levels of management is:
- 249. Division of labor and the distribution of tasks between particular departments of the enterprise is called:
- 250. The development of detailed bylaws, regulations and procedures is called:
- 251. Formal information flow is the fastest in the organizations:
- 252. Unification of actions, behaviors and procedures is called:
- 253. A structure facilitating interdisciplinary work that requires cooperation, is flexible and enhances synergy is:
- 254. The structure in which there are two types of positions, managerial and executive, is:
- 255. The characteristics of organizational staff cells include:
- 256. What is a process map used for?
- 257. What does Kaizen mean?
- 258. What is the Ishikawa Diagram used for?
- 259. The PDCA cycle was introduced by:
- 260. Costs of non-compliance include:
- 261. The risk factor in the FMEA method is:
- 262. The basic document defining the rules and procedure of conduct, responsibility for actions and conditions of their supervision is:
- 263. The input data in the QFD method are:
- 264. The current definition of audit used in the 19001 standard is:
- 265. A unique, complex undertaking completed within a finite period of time, realized by a team in a way that is relatively independent from the repetitive activity of the organization, using special methods and techniques:
- 266. Which three key project parameters constitute a project triangle:
- 267. The creator of a well-known theory of roles in a project team is:
- 268. The most important methods of networked project planning include:
- 269. A critical path in a project is:
- 270. What are the two dimensions of a risk assessment matrix in a project?
- 271. The basic role of IT systems in project management is:
- 272. According to the Project Management Institute, the basic areas of project management include:
- 273. Graphical presentation of project division into particular tasks and time schedule is:
- 274. Who is most often considered to be the creator of the theory of organization?

Issues for the entrance exam
Second-cycle studies in the field of MANAGEMENT (specialty International Management)

275. Gantt was the forerunner of:
276. According to Fayol, administrative functions include:
277. Which trend in management sciences focused on the organization of executive processes (production and service processes)?
278. Which trend in management sciences focused on the organization of processes in the economy and administration?
279. Who is considered to be the creator of the work methods research?
280. Who is considered to be the creator of analytical evaluation of work?
281. Who is considered to be the creator of the SMED method?
282. One of the basic methods for assessing company's competitiveness was developed by:
283. What are the basic prerequisites for the Patent Office to issue a decision on granting a patent for an invention and a protection right for a utility model ?
284. Priority to obtain a patent is determined based on:
285. What is the nature of the priority right to obtain a patent?
286. What behavior represents unfair competition?
287. What rights are acquired after granting a patent by the Patent Office of the Republic of Poland?
288. What is the form of an industrial property right (patent) transfer agreement (in Polish copyright law)?
289. What are the criteria for patentability?
290. What is distributed works (in Polish copyright law)?
291. What constitutes a business secret?
292. What is the subject of copyright protection?
293. What are the rules of disposal and use of the work by its author?
294. What is the method of software protection?
295. What are the premises of permitted private use (In Polish copyright law)?
296. When is the right to quote entitled?
297. An industrial design in a specified form is protected:
298. Another person's patent for an invention may be infringed, excluding the license, without any consequences:
299. When is an inventor of a patented invention entitled to remuneration from the person who uses that invention?
300. In order to distribute his/her work abroad, in accordance with copyright law, the author should:
301. The examples of a company external equity financing are:
302. A principle according to which a company should aim at the best possible achievement of its targets or minimum consumption of resources , if better realization of targets is not possible, is:
303. The forms of employment of a natural person based on a non-employment contract do not include:
304. Leasing involves:
305. A takeover, against payment, of a proven business idea that has been tested and developed by another entity, and then its implementation with the support of the initiator of the idea, is:

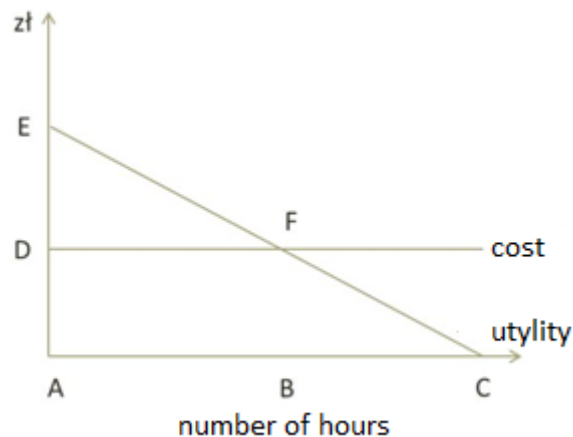
- 306. An entrepreneur who in at least one of the last two financial years employed on average less than 10 employees annually and achieved an annual net turnover from the sale of goods, products or services and financial operations below the PLN equivalent of EUR 2 million or whose total assets in a balance sheet at the end of a financial year did not exceed EUR 2 million, may be included in the group:
- 307. Primary financial or in-kind contributions of the owners, made at the moment of establishing a limited liability company are referred to as:
- 308. Maintaining comprehensive bookkeeping, i.e. recording all business operations and keeping the so-called accounting books, is an obligation for every entrepreneur who:
- 309. When establishing an individual business activity, it is not necessary to:
- 310. What type of organization does not need managers?
- 311. The fulfillment of social needs, according to Maslow's theory of the hierarchy of needs in the organization, includes:
- 312. The purpose of work-life programs is:
- 313. The European Social Charter is a guarantee of:
- 314. In the Maslow pyramid of needs, the needs are arranged in the following order (from the basic needs):
- 315. Individualism and collectivism are the cultural dimensions proposed by:
- 316. The form of supporting employees in carrying out tasks and developing competences is:
- 317. Interpersonal relations and the arrangement of positions within the groups enable identification of:
- 318. The interactive structure determines to a large extent:
- 319. Acceptance of equality in the system of social relations is connected with:
- 320. The hierarchy of needs according to Maslow is used to:
- 321. In three-dimensional space, $Ax + By + Cz + D = 0$ equation describes:
- 322. The elasticity of a function of one variable in a point informs us about:
- 323. The gradient of f function at a point is called:
- 324. The result of solving a system of equations is $r(A)=3$ and $r(U)=3$, where A represents the main matrix and U is an augmented matrix for this system of equations. Then the system of equations:
- 325. D is an interval and $f: D \rightarrow \mathbb{R}$ is a function of the argument x . The function $f: D \rightarrow \mathbb{R}$ is called the primary function of the function f , if:
- 326. The prerequisite for the convergence of the series $\sum_{n=1}^{+\infty} a_n$ says that:
- 327. Bernoulli's differential equation of $\frac{dy}{dx} + p(x)y = q(x)y^s$ is solved by reducing it to a linear equation for the function $z = z(x)$ by substituting:
- 328. What is the scalar product of two three-dimensional vectors?
- 329. The matrix is reversible if:
- 330. The integrable functions are:
- 331. A definite integral is:
- 332. A cosmetic company operating on the Polish market intends to offer its customers a new line of care products. Which criterion of segmentation will be important here?
- 333. The most appropriate pricing strategy for a product (telecommunication industry) to be released on the market as an absolute innovation is:
- 334. An example of expense that is not a cost is:

Issues for the entrance exam
Second-cycle studies in the field of MANAGEMENT (specialty International Management)

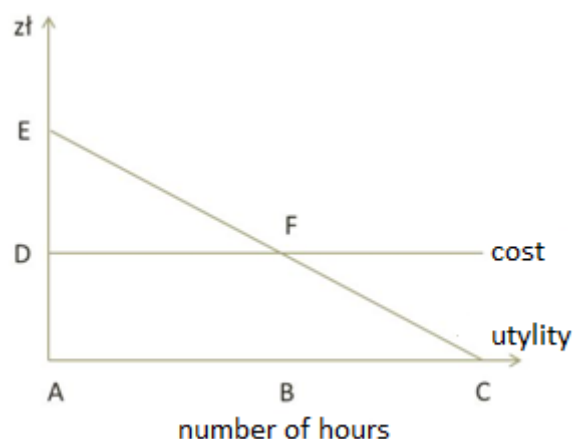
335. Which indicators can be used to assess company's ability to meet its current liabilities:
336. What are the conditions of people's behavior in an organization that include ease of perception?
337. Group influence on the individual in an organization could be included among which determinants of human behavior in organization:
338. Differences in standards and values recognized by different categories of employees in the organization could be included among which determinants of human behavior in organization:
339. If the approving authority has not adopted a resolution on the division of the financial result for the previous financial year, the amount of the result for the current financial year is presented in the balance sheet in accordance with the Accounting Act as an item:
340. Short-term liabilities include:
341. The Cash Flow analysis, based on the project risk assessment, assumed a discount rate of 8%. The internal IRR rate of return on this investment is 10%. Should this investment be carried out?
342. A company operates under conditions of perfect competition and sells its product at market price. What will happen if the company increases the price?
343. A company operates under monopoly conditions and sells its product at a price it has set itself. What will happen if the company increases the price?
344. Which tool would you use to assess the financial situation of the company?
345. Shortening of working capital cycle is achievable through:
346. Marginal cost of shortening working capital cycle should be:
347. A high level of operational leverage where other conditions remain unchanged means that:
348. Does increasing investment always lead to production growth?
349. Does the increase of working time always lead to production growth?
350. Increase in interest rates makes financing of an investment with one's own cash:
351. The value of tangible fixed assets under construction in connection with its valuation as of the balance sheet date increases, among others, :
352. Tangible current assets may include:
353. An enterprise operating in an openly competitive market will reduce its production volume when:
354. Which of the following situations indicates that the company operates in the condition of a monopoly?
355. Economies of scale arise when, along with production increase:
356. A couple of duopolists competing in terms of prices have only two options: to set a high price of 8 USD or a low price of 6 USD. Both companies are forced to set prices independently of each other. The table shows the effect of different pricing strategies on the companies' profit levels. What pricing strategy will these companies choose:

		Company 2	
		High price	Low price
Company 1	High price	10, 10	5, 12
	Low price	12, 5	7, 7

357. You attend lectures on Managerial Economics. Your costs and marginal utility from participating the classes are shown in the chart. In view of a correct cost-benefit analysis, you would decide to attend the following number of hours:



358. You attend lectures on Managerial Economics. Your costs and marginal utility from participating the classes are shown in the chart. In view of a correct cost-benefit analysis, your net benefit is:



359. Based on the decision tree method, you calculated that the expected value associated with the decision to introduce a new product to the market is equal to PLN 10 million. Unfortunately, the project ended in failure. Your decision concerning the implementation of this project was:
360. You have estimated the function of demand for airline tickets as: $Q = 22.4 - 2.1P + 1.1P_k + 3.2Y$, where: Q - sales, P - ticket price, P_k - ticket price of the competitor, Y - income of the population. The reduction of the ticket price by your competitor by 10 PLN will result in:
361. The estimated production function of your company is $y = 1,35 * x_1^{0,77} * x_2^{0,35}$, where x_1 is capital and x_2 is labor. Thus, an increase in capital expenditure by 1% will result in an increase in production volume by:
362. The short-term total cost function is: $Kc = 20 + 10Q + Q^2$, where Q is production volume. In case of production volume $Q = 100$, the fixed cost will be:

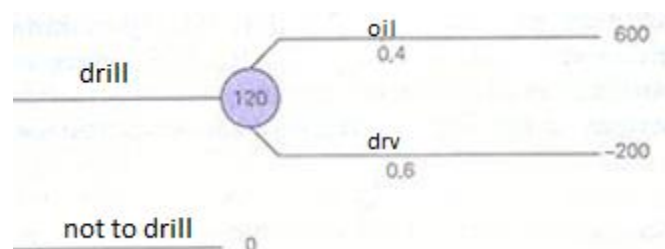
363. A company is trying to minimize its total production costs represented by an equation: $K_c = f(Q_1, Q_2)$, where Q_1, Q_2 are production of product 1 and 2. The company's production capacity is limited: $Q_1 + Q_2 < 100$. If Lagrange multiplier for this task is $z = 10$, then the increase in production capacity will cause:
364. A manager responsible for manufacturing a product wants to define the production volume and price that will ensure maximum profit. On the basis of marketing research and production analysis, he estimated the profit function for this product as: $Z = 2Q - 0.1Q^2 - 3.6$. The marginal cost necessary for further calculations is:
365. An investment project has been assessed. With a discount rate of 5% NPV= 1200, the internal rate of return on this investment project:
366. Three investment projects were evaluated. For the same discount rate NPV1=200, NPV2=0, NPV3=-10. Which of these projects is the most profitable?
367. A company has to choose between two investment projects: project A with NPV = 200 and IRR = 5%, and project B with NPV = 200 and IRR = 6%. Which project should be selected?
368. An investment project is profitable if its internal rate of return is greater than or equal to:
369. At the end of a period, on the account "Operating costs", Dt turnover was 2000 and Ct turnover was 5000. This means that:
370. 370. In an economic unit, the selected information on the opening (OB) and closing balance (CB) of some accounts is as follows:
- Materials OB 1000, CB 3000;
 - Work in progress OB 300, CB 400;
 - Finished goods OB 6000, CB 5000;
 - Credit/negative Deviations from the standard Price of Products OB 600, CB 500;
- The amount and nature of change in the balance of products are as follows:
371. A company is characterized by the following parameters: price elasticity of demand for the product - $E_p = -0.1$; income elasticity of demand for the product - $E_Y = 1.0$; intended price increase of the product - 10%; estimated increase of consumer income - 5%. What changes in demand await this company?
372. Your company produces a product with a fixed marginal cost $MC = 10$ PLN/piece. The unit cost is 15 PLN/piece. Demand for this product is characterized by the price elasticity factor $E_p = -2$. The optimal price level for this product on such market is?
373. Price elasticity of demand for petrol is $E_p = -0.3$. Estimated increase in the price of petrol is 20%. Under these conditions, the demand for petrol:
374. What will be the average capital cost of borrowed money, if the loan interest rate is 27% and the income tax rate is 30%?
375. Company "X" sold 1,000 pieces of product at 10 PLN/piece, fixed costs amounted to 3,000 PLN, variable costs 4,000 PLN, and tax 20%. What is the EBIT?
376. Which tools will you use to assess the effectiveness of your investment?
377. Which tools will you use to identify risks?
378. Which tools will you use for financial analysis?

379. In a certain country, we have 4 parcels of land, 100 hectares each, characterized as below:

Parcel of land	Land input	Labor input	Production
G1	1	5	1 ton
G2	2	2	1 ton
G3	2	2.5	1 ton
G4	5	1	1 ton

The pay is 0.1 ton for a unit of labor. All parcels of land are cultivated using one method. The production profit rate of 10 tons is:

380. Let's assume that the price $p = 5$, the fixed costs are 10 and the marginal costs are $K_k(x) = 2$. Profit for production of 10 pieces is:
381. Let's assume that the price $p = 10$, the fixed costs are 10 and the marginal costs are $K_k(x) = 1$. Profit for production of 10 pieces is:
382. Let's assume that the price $p = 5$, the fixed costs are 10 and the marginal costs are $K_k(x) = 1$. Profit for production of 10 pieces is:
383. The external factor influencing the choice of product distribution strategy is:
384. Among the external factors influencing the pricing of products, it is worth to mention:
385. Using the PEST model, we can analyze:
386. Using Porter's "5 forces" model, we can analyze, among others, the following:
387. We can use the BCG matrix to, among other things:
388. Using the extrapolation of trends, one can estimate:
389. In the analysis of an organization's near environment, we take into account:
390. A company identifies three market segments with the price elasticity of demand equal to, respectively, segment 1 = (-5), segment 2 = (-4) and segment 3 = (-3). The sales marginal cost in each segment is 200 PLN. The company will offer the highest price in segment:
391. Your company is planning to introduce a new product to the market. The prior experience of the company indicates that the probability of market success of a new product equals 30%. The success would bring the profit of 1 million PLN, whereas the failure would cost the company 0.5 million PLN. Assuming that the company's management board is going to apply the criterion of anticipated value, what decision should be made in this situation – should the new product be introduced to the market or not?
392. An oil prospector has to decide, whether to start drilling the oil well. The cost of drilling is \$200,000. This money shall be irretrievable, if the well turns out to be a "dry hole", that is, the place does not hold oil deposits. If, however, the well is successful, the exploiter shall make the profit of \$600,000. The probability of finding oil equals 40%, of failure – 60% (see the chart below). What decision should be made:



393. Ecosystem services can be priced by assigning monetary value to:

- 394. Economic valuation of environment can be performed using direct methods (declared preferences), in which the value of environmental goods is determined by:
- 395. If the tax rate drops from 33% to 22%, then the decrease equals:
- 396. If the nominal GDP increases from 200 to 220 and the inflation level is 10%, then the real increase of GDP equals:
- 397. If inflation between year 1 and year 2 was 5% and real GDP growth was 3%, how much was nominal GDP in year 2 if it was 200 in year 1?
- 398. If between year 1 and 2 GDP grew in real terms by 3% and inflation dropped from 5% to 4%, then nominal GDP increased by:
- 399. If between year 1 and year 2 GDP grew in real terms by 3% and inflation rose from 5% to 7%, then nominal GDP increased by:
- 400. In the country where XYZ company operates, the unemployment rate has changed significantly. This change concerns:
- 401. The two main competitors of ABC enterprise have just announced strategic cooperation. This change concerns:
- 402. A key supplier of ABC company has just declared bankruptcy. This change concerns:
- 403. In the country in which XYZ company operates, the age structure of population is changing (the citizens are ageing). This change concerns:
- 404. For the quantity of sales of a certain product, a chain index has been determined. The value of this index in 2018 was 1.21. This means that :
- 405. How can a trend of a given phenomenon can be distinguished by eliminating its seasonal fluctuations?
- 406. For the quantity of sales of a certain product, an index with a fixed base was determined, assuming 2016 as the basis. The value of this index in 2017 was 1.21, while in 2018 the index was 0.83. This means that :
- 407. In terms of quarterly seasonality indices of sales of an item, for Q3 the multiplicative model is 0.93. This means that:
- 408. In terms of quarterly seasonality indices of sales of an item, for Q3 the additive index is 0.93. This means that:
- 409. In the additive model for the quarterly data regarding revenue (in million PLN) of a company, the seasonal fluctuation indicator $S_3 = 0.7$ was calculated. On this basis it can be concluded that:
- 410. In the multiplicative model for the quarterly data regarding revenue (in million PLN) of a company, the seasonal fluctuation indicator $O_3 = 0.7$ was calculated. On this basis it can be concluded that:
- 411. In the additive model for the quarterly data regarding revenue (in million PLN) of a company, the seasonal fluctuation indicator $S_3 = 1.2$ was calculated. On this basis it can be concluded that:
- 412. In the multiplicative model for the quarterly data regarding revenue (in million PLN) of a company, the seasonal fluctuation index $O_3 = 1.2$ was calculated. On this basis it can be concluded that:

413. Based on the data presented in the table calculate the relative market share for ABC company (x in BCG analysis):

Sales in mln PLN									
Analyzed company		Competitor 1		Competitor 2		Competitor 3		Total	
current year	previous year	current year	previous year	current year	previous year	current year	previous year	current year	previous year
90	65	75	70	40	28	50	29	255	192

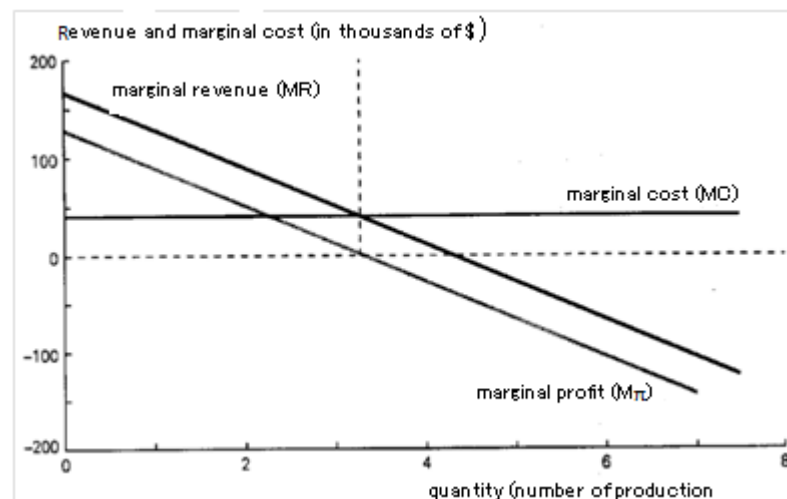
414. Based on the data presented in the table calculate the product dynamics (y value in BCG analysis):

Sales in mln PLN									
Analyzed company		Competitor 1		Competitor 2		Competitor 3		Total	
current year	previous year	current year	previous year	current year	previous year	current year	previous year	current year	previous year
90	65	75	70	40	28	50	29	255	192

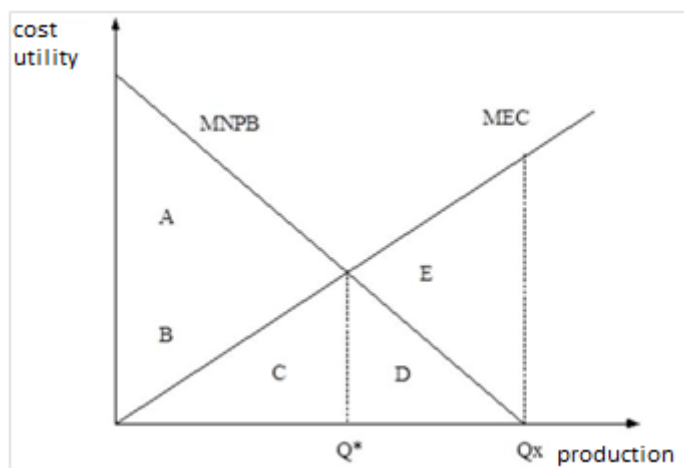
415. Based on the data presented in the table the analyzed product of ABC company in the BCG analysis is (the dynamics of the entire sector is 11%):

Sales in mln PLN									
Analyzed company		Competitor 1		Competitor 2		Competitor 3		Total	
current year	previous year	current year	previous year	current year	previous year	current year	previous year	current year	previous year
90	65	75	70	40	28	50	29	255	192

416. How will the increase in fixed costs affect the optimal production decision of your company?
417. How will the increase in variable costs affect the optimal production decision of your company?
418. When can the two objectives of a company - maximizing profit and maximizing revenue – overlap?
419. The number of batches of the product you produce is 4 (see figure). It will be beneficial for you:



420. The socially optimal production level of an enterprise causing external costs (where MNPB - marginal net private benefit function; MEC - marginal external costs function) is:



421. If the share of fixed costs in total costs is high, sensitivity of profit to fluctuations in sales is:
 422. The efficiency of assets measured by operating profit must be:
 423. Financial planning enables:
 424. Planning of cash receipts and expenses in very short periods of time, even several days:
 425. In order to describe the return on equity, it is possible to use the indicator:
 426. A decrease in receivables at constant value of sales will result in:
 427. A manager is anticipating the distribution of results probability for a new product launch in the first year of sales presented in the table below.

Result	Sales revenue in the first year (USD)	Probability
Absolute success	10 000 000	0.1
Promising prospects	7 000 000	0.3
Ambiguous market reaction	3 000 000	0.2
Failure	1 000 000	0.4

The expected value of revenue from the sale of this project is:

428. In small and microbusinesses, the most frequently used method of employee evaluation is:
 429. In a situation of urgent need to hire a highly qualified production manager and under the conditions of an employer's market, the most appropriate method of recruitment is:
 430. The main drawbacks of the Assessment Centre method used in the selection process are:
 431. The most important advantages of employee improvement within the organization are:
 432. What perks will work best in an IT company that employs mostly young people?
 433. Which rules of job organization are adopted in asynchronous pipelines in order to ensure equal workload for all employees?
 434. Efficiency of production process is affected by:
 435. In order to ensure synchronization of the manufacturing process, it is necessary to:
 436. A bottleneck in a production process can be identified based on:
 437. Which type of production process organization ensures the shortest time of production cycle?
 438. A company has recently changed its technological line. The main issue in the nearest future will be:

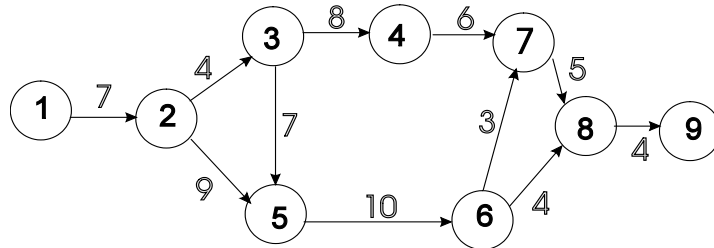
439. The production process of a certain product includes four consecutive operations with times: 2 min, 6 min, 5 min, 4 min. What is the process productivity?
440. The production process of a certain product includes four consecutive operations with times: 2 min, 6 min, 5 min, 4 min. The bottleneck of the process occurs on the station performing operation:
441. By how many units will the efficiency of the production process increase if the tact ($T=20$ min) in parallel production flow is shortened by 25%?
442. How many % should the cycle ($T=20$ min) of the parallel production process be shortened in order to increase productivity by 60 %?
443. Which behavior is not recommended for novice businesspeople who want to reduce the risk of business failure?
444. While considering the establishment of a limited liability company and if one wants to explore the legal basis for its creation and operation, one should look at the following:
445. A limited partnership is a form of cooperation between entities with diversified capital. One of its advantages is that:
446. In order to secure funds for the development of a company in the initial period of its existence, it is possible to use the so-called small ZUS (Social Insurance Institution), which allows to pay:
447. Partners in a limited liability company are only obliged to pay:
448. Partners in a limited liability companyfor the liabilities of the company:
449. A limited liability company may be established by:
450. For the establishment of a joint-stock company it is required:
451. In order to register a limited liability partnership in a registry court, it is necessary to enclose:
452. Anna was given several dozens of Dutch tulip bulbs as a birthday present. Because it was too late to plant them in the garden, Anna asked her friend, Natalie, to plant them in a greenhouse that she rents from Monica. In the spring, the flowers:
453. As previously agreed, X sold his van (registration number K1 MAX) to Y for 19 000 PLN, paid in cash on the spot, pick-up in 2 days from the transaction, in X's garage. When Y arrived to collect his car, it occurred that a fire extinguisher, a warning triangle and a spare wheel were missing. Surprised Y was informed by X that the agreement concerned the car, not the additional equipment. Choose the answer based on your assessment of this situation:
454. A foreign investment company intends to start its business in Poland. The company produces and sells LCD computer monitors. Until the company has built its own production plant, it will rent a factory from a Polish company. During the preliminary negotiations, the parties agreed that all contracts should be concluded in the form of a notarial deed. Two months later, the parties contracted a factory building lease agreement and the signatures on the document were officially certified. Choose the answer based on your assessment of this situation:
455. 'Young singles', 'Young, married and childless', 'Young, married, with the youngest child under 6 years of age', 'Young, married, with children over 6 years of age' - it is the segmentation of a certain market on the basis of a criterion related to :
456. The correct order of procedures used to select the target market is:
457. What communication tool should a flour producer use to increase sales of products in the short term?
458. The costs directly linked to operating activities are:

459. A segment in the profit and loss statement that reflects only the profit or loss of the principal activity of an enterprise is:
460. Other operating costs include:
461. The result concerning sales of fixed assets will be included in the segment:
462. What type of balance sheet operation is the creation or increase of supplementary capital or provision as a result of profit distribution?
463. Breaking down strategic planning to specific action plans allocated in space and time and securing the basic conditions of the organization's existence: profitability and financial liquidity, are functions:
464. Increase in the value of inventory at constant sales value will cause:
465. What criteria should be taken into account when assessing the effectiveness of an investment?
466. The minimization of services intangibility should be conducted by means of:
467. The minimization of services heterogeneity should be conducted by means of:
468. The minimization of services indivisibility should be conducted by means of:
469. The minimization of services perishability should be conducted by means of:
470. The Spearman's correlation coefficient defines:
471. If, in the regression model, the dependent variable (explained, y) is expressed in PLN, then the independent variable (explaining, x) is expressed:
472. If in the linear regression equation $y = a_0 + a_1x$ and intercept a_0 is negative, then:
473. In order to store a phone number in the database, what type of field should be selected?
474. What task does the presented program perform?
- ```
s = 0
i = 1
do
 a = Cells(i, 1)
 s = s + a
 i = i + 1
Loop while a <> 0
Cells(1, 2) = s
```
475. Which of the following algorithms gives the variable  $k$  value 0:
476. Which of the following algorithms gives the variable  $k$  value 3:
477. Which of the following algorithms gives the variable  $k$  value 0, and the variable  $j$  – value 3?
478. Which of the following algorithms gives the variable  $k$  value 3, and the variable  $j$  – value 0?
479. The execution of the instruction in Visual Basic for Application “ $k = 3 \setminus 2$ : if  $k \leq 1$  then  $k = k - 1$  else  $k = k + 1$ ” gives the variable  $k$  value:
480. The execution of the instruction in Visual Basic for Application “For  $k = 1$  To 4: Next  $k$ ” gives the variable  $k$  value:
481. In Visual Basic for Application, the instruction `Cells(2,4) = Inputbox (“Enter x”)` will cause:
482. Internal audits in quality systems are carried out by:
483. What enables us to confirm the compliance of the requirements of the management system with the relevant ISO standards?
484. A detailed plan (program) of a given management system audit is developed:
485. It is the responsibility of the management systems auditor to:
486. The auditor of management systems during the audit cannot:

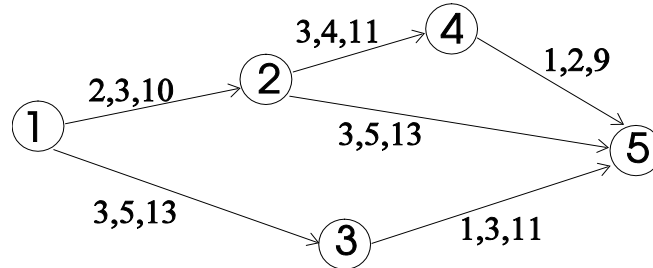
Issues for the entrance exam  
Second-cycle studies in the field of MANAGEMENT (specialty International Management)

- 487. Which standard will you use when auditing information security aspects?
- 488. Which criteria will you take into account when deciding on the composition of your internal audit team?
- 489. When auditing an organization's context, you will pay particular attention to:
- 490. What action will you take to complete the process of carrying out the audit activities on site?
- 491. Evaluation of employees may be an important element of which managerial function:
- 492. In human resources management, feedback has the following roles:
- 493. Which model should be used to measure the effectiveness of training and its impact on the organization's performance?
- 494. In order to change the employee's behavior, the most effective methods of professional training are:
- 495. When is a quality management system audit considered to have been completed?
- 496. In what cases is ISO 9001 standard binding?
- 497. The right choice of incentive system requires the identification of:
- 498. What aspects need to be considered when determining the processes needed in the quality management system?
- 499. What approach to planning, organization and control processes will you apply for the quality management system?
- 500. What tool will you use to evaluate the supplier's management system?
- 501. What should be used to perform a quantitative analysis of data from the controlled process?
- 502. What tool would you use to describe the process:
- 503. Which method should be used in order to understand the needs and expectations of stakeholders concerning the quality management system?
- 504. What serves the purpose of quality control of social potential management?
- 505. From the point of view of an organization, the key objectives should be:
- 506. A justified part of indirect production costs includes:
- 507. Total production cost (Polish: *techniczny koszt wytworzenia*) includes:
- 508. In a comparative profit and loss account by nature of expenses, what is moved to the "Allocation of costs by type" Dt side:
- 509. Which accounts are used to prepare the profit and loss statement by function:
- 510. Fixed assets in the balance sheet are priced according to:
- 511. Economic operations included in the category of a result-affecting operation result in, for example:
- 512. An action against a legal person or other entity that is not a natural person is brought according to:
- 513. A pecuniary claim against an entrepreneur may be brought before a court:
- 514. How many times can the court refer the parties to mediation in the course of proceedings?
- 515. A summons to a conciliation hearing - irrespective of material property - can be directed to:
- 516. If a general partnership is not able to pay off all liabilities because its assets are not sufficient for this purpose, it should:
- 517. What should be done if it is necessary to apply the provisions of an act that consists of provisions of the general part and the provisions of the specific part:
- 518. In order to estimate lead-time for a task in a project, it is possible to use:
- 519. If the time reserve for the task execution is 0, it means that:

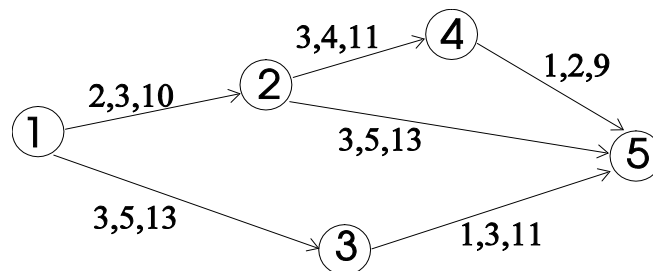
520. How much time does it take to complete the last task in the diagram?



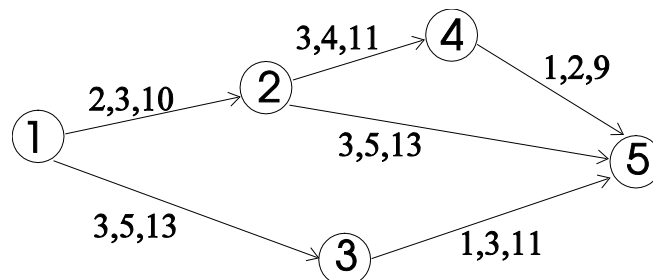
521. How many tasks in the project structure are distinguished in the diagram?



522. How many events in the project structure are distinguished in the figure?



523. What method should be used to determine the completion date of the project presented in the diagram?



524. What is used for priority setting and time management:

525. "Sequential" and "diachronic" managers can be identified:

526. In order to ensure that the objectives are achieved in a timely manner, it is necessary to:

527. Which of the project management tools makes it possible to present tasks on a timeline?

528. Postponing tasks in a project schedule is connected with:

529. Which of the activities related to tasks on the critical path may not result in shortening the project implementation time?

530. Which tool should be used to specify the project tasks that must be implemented in order to achieve the assumed objectives?

531. Rules of promotion adopted in an organization could be included among which determinants of human behavior in an organization:

Issues for the entrance exam  
Second-cycle studies in the field of MANAGEMENT (specialty International Management)

- 532. To which category would you assign an activity of bending pages in a student record book that is supposed to bring luck during an exam?
- 533. To which category would you assign studying a user's manual to determine the cause of malfunctions of the device?
- 534. To which category would you assign slamming a door when you are angry because of a leaking tap?
- 535. To which category of activities would you assign searching for reading materials that help you develop your interests?
- 536. "Inconsistency of two or more attitudes of a person, or differences between attitudes and actions". What phenomenon is described?
- 537. What phenomenon is being dealt with if an individual shows strong inclinations to accepting and sharing anti-democratic beliefs manifested in conservative views and attitudes, as well as in the perception of the world through the lens of stereotypes and schematic "rigid" reasoning?
- 538. Which psychological concept do you rely on when inducing desired behaviors based on a system of punishment and reward?
- 539. Workaholism is an example of:
- 540. What organizational structures should be applied in the case of particularly complex products, implementation of which is a one-off project?
- 541. What organizational structures should be applied in the case of particularly complex products and projects requiring the integration of many professional specializations, especially in a changing environment?
- 542. When designing an organizational structure, it should be remembered that the higher the level of management, the:
- 543. Which organizational structures should be applied if a small number of management levels and a wide scope of leadership are required?
- 544. What should be done to ensure that the control function is effective?
- 545. What measure should be used to determine the extent to which objectives have been achieved?
- 546. What measure should be used to determine the degree of utilization of resources?
- 547. In what enterprise is a functional structure desirable?
- 548. Which organizational structures should be used if it is required to focus on customers and their expectations?
- 549. What enables the estimation of costs related to a building or construction product over its entire life cycle?
- 550. When planning the demand for working capital, one should consider:
- 551. Longer working capital cycle means that:
- 552. Shortening of working capital cycle is achievable through:
- 553. Marginal cost associated with shortening of working capital cycle should be:
- 554. In order to increase the money supply  $M0$ , the central bank may:
- 555. If there is a steady increase in inflation, it can be expected that the central bank in Poland will:
- 556. If a rate of indirect tax is falling, the resulting situation will be favorable for:
- 557. If, in a certain period of time, labor efficiency is a non-negative linear function, then the production in this period is:

558. If the marginal cost function is a linear function of production level, then the total cost function is:
559. If the marginal cost function is constant, the total cost function is:
560. If public debt is in a foreign currency, strengthening of local currency without any changes in other parameters causes:
561. A persuasive speech has the purpose of:
562. Public speaking involves the ability of using:
563. Public speaking involves:
564. The ways people influence each other are called:
565. An introduction to a public speech requires:
566. In order to end a public speech, one should:
567. If you want to reach your audience you need to:
568. Solving a problem or working out a solution involves knowledge of:
569. During a public speech one should not:
570. How many solutions does the system of equations  $\begin{cases} x + 3y = 1 \\ 2x - y = 2 \\ 3x + 2y = 3 \end{cases}$  have?
571. How many solutions in the body of complex numbers does the equation  $z^3 + 1 = 0$  have?
572. Let A be the cost structure matrix, then the Leontief matrix is calculated according to the formula:
573. What is the derivative of function  $f(x) = \ln(x^2 + 1)$  for the argument  $x_0 = 0$ ?
574. What is the price elasticity of demand if  $p = 2$  and the demand function is defined by the formula  $D(p) = 6 - 0,1p^2$ ?
575. Indefinite integral  $\int x \cos x dx$  is:
576. Indefinite integral  $\int_{-37}^{37} x^2 \sin x dx$  is:
577. The convergence area of the power series  $\sum_{n=0}^{+\infty} \frac{n(n+1)}{5^n} x^n$  is:
578. The results of ergonomic research show that productivity (number of pieces/hour) during a 12-hour working day can be well approximated by the formula:  $f(t) = 12t - t^2$  for  $t \in [0,12]$ . What is the daily production:
579. In a certain enterprise, the marginal cost function has the form:  $K'(x) = 3x^2 - 2x + 20$ . The daily production plan assumes 200 pieces of product. How will the total costs change when the daily plan increases by 20 pieces?
580. Let's consider the cobweb model for which:  $Q_d(t) = 22 - 3P_t$ ,  $Q_s(t) = -2 + P_{t-1}$ , where  $Q_d(t)$  is demand and  $Q_s(t)$  is supply at moment  $t$ . Assuming the balance between supply and demand in all time periods, it can be concluded that:
581. Let's consider the model of inflation expectations:  $\frac{d\pi}{dt} = 0.5(2.5\% - \pi)$ , in a very long term, expected inflation:
582. Company XYZ is the only company in the world that manufactures product A. Which of XYZ's decisions will increase the obstacles that hinder entry into the market:
583. ABC is a manufacturer of specialized X components. There are two companies (A and B) that use these components in their products. ABC is a supplier to both companies. Companies A and B have just announced a merger. What does this mean for ABC?

Issues for the entrance exam  
Second-cycle studies in the field of MANAGEMENT (specialty International Management)

- 584. Company XYZ's product A is, according to the BCG matrix, a dog. It means that the XYZ enterprise should:
- 585. Company XYZ's product A is, according to the BCG matrix, a cash cow. It means that the XYZ enterprise should:
- 586. Company XYZ's product A is, according to the BCG matrix, a star. It means that the XYZ enterprise should:
- 587. What units can be used to provide a critical path analysis result?
- 588. In BCG analysis, product X has a high share in a dynamically developing market. Therefore, it is:
- 589. In BCG analysis, product X has a low share in a dynamically developing market. Therefore, it is:
- 590. In BCG analysis, product X has a high share in a stable market. Therefore, it is:
- 591. In BCG analysis, product X has a low share in a stable market. Therefore, it is:
- 592. In ABC company, the debt ratio is at the level of 0.6. This result means that:
- 593. What is the break-even point if: fixed cost = 1000 PLN/month; unit variable cost = 2 PLN/piece; unit price = 3 PLN/piece?
- 594. Received dividend is recorded in a company as:
- 595. Where in cash flow should a received two-year loan be recorded?
- 596. If you have: expert knowledge, the ability to create innovative solutions, motivation for achievements and solving problems, you certainly:
- 597. When I believe someone else's behavior to be appropriate, I refer to:
- 598. The ability to think deeper, to think about oneself and one's actions is:
- 599. An attitude characterized by emotional distance to the performed tasks, a belief that the goal justifies the means, is:
- 600. A superior addresses his/her subordinates using the pronoun "you," and they address him/her "Mr./Ms.". During lunch breaks they eat in separate rooms of different standards. This means that: